

SEMBS

SOUTHEAST MICHIGAN BROMELIAD SOCIETY

AFFILIATE OF BROMELIAD SOCIETY INTERNATIONAL

JULY / AUGUST 2016



WOW! WHAT A GREAT HANGOUT!

P. Goff - 2016

July Meeting

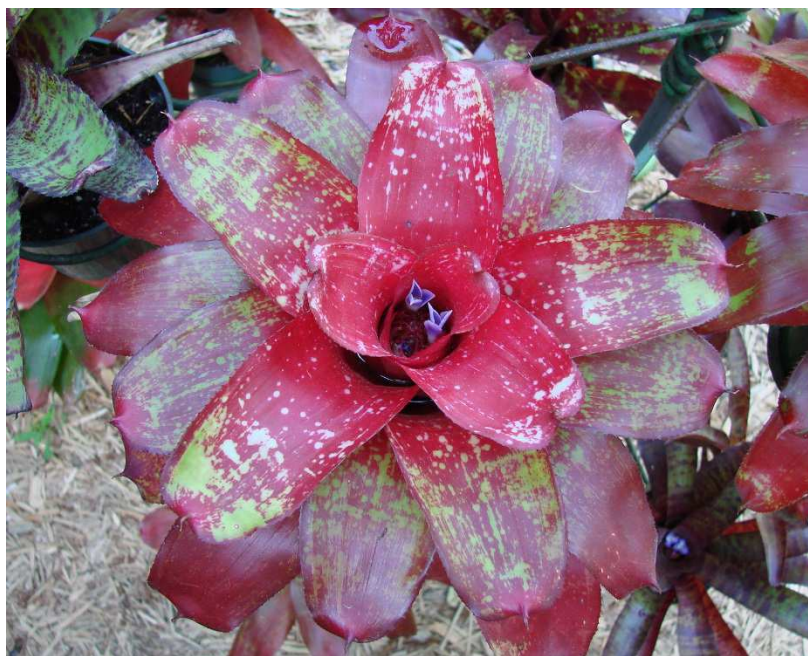
The Southeast Michigan Bromeliad Society will hold its next meeting on Saturday, July 9, 2016, 1:00 PM, at the home of Pat and Lynne Echlin, 1420 Avon Circle W., Rochester Hills, MI 48309. They will host a pot-luck luncheon. Pat and Lynne provide the meat- last year it was hamburgers and hot dogs, and Pat operates a mean barbeque! Call Lynne (248)-651-9521 to let her know that you plan to attend, and what side dish you plan to contribute.

One of the benefits of society membership is that there are occasions when kind acts of generosity are bestowed on the group. A friend and bromeliad grower from Los Angeles, CA has donated a bounty of Billbergias to our society. They will be distributed at the July meeting. New members, and those who have not previously attended a monthly meeting will be given a free plant. Subsequently, we will run one of our “dutch auctions” with all donations going to the society’s general fund.

We don’t often conduct a lot of business at these social gatherings, but an election of officers is long overdue. Nominations will be called for at the July meeting, with the election to follow at the August meeting.

At the May meeting, we casually discussed following the example of the Sunshine Coast Bromeliad Society (Australia) and try having a Favorite Bromeliad Competition at the July meeting. The idea was met with unexpected enthusiasm! This will be a very informal contest, and perhaps should be considered more of a glorified “show and tell”. However, it will generate some content for the newsletter, and generate some enthusiasm. Photos will be taken of the “winning” plants, and we will be able to have a record of popular plants of the time. We will create categories to encourage as much participation as possible: Novice / Experienced, Foliage / Flowering, or specific genera are all to be considered.

The World Bromeliad Conference was held in Houston, Texas from June 14-18, 2016. Paul Wingert attended, and he will have a full report of the seminars, tours, show, and sales. Paul may have a couple of his new plant acquisitions (from 20 or so overall!) to display at the July meeting as well, though many need to get rooted and established a bit. Here are a few photos of some of the fantastic Show plants as a teaser-- it gives a good sense of the plants that are popular in that region, the diversity of plants in the show, and the quality of growing!



One of Paul Wingert's new hybrids coming into bloom, June 2016



August Meeting

The August meeting will be held on Saturday, August 13, 2:00 PM, at the home of Paul and Karen Wingert, 27276 Edgemoor, Farmington Hills, MI 48334. Bromeliads typically achieve peak color in August; Paul's shadehouse will be ablaze. His new acquisitions from Houston will hopefully all be established, and starting to show their full color. We will carry on with our "Favorite Plant" show and tell – those of you who purchased plants in the Spring plant order should have some beautiful things to place on the table! Also, a reminder for those who received free seedlings over the past two years; we'd like to see how those plants are developing! Please bring them along to the meeting. During the meeting, we will hold an election of officers. We also need to discuss preparations for our annual show & sale at Matthaei Botanical Gardens. There has been increased member participation with the plant display, and it would be wonderful to see that trend continue! The Michigan Cactus & Succulent Society will be sharing the space in Greenhouse 4, as they have now for the past few years. It has been a wonderful partnership, and both societies benefit from co-presenting the event.

A few things followed Paul home from Houston—



Many species of Dyckia, Hechtia, Deuterocohnia, Puya, and cold hardy Aechmeas can become part of the permanent landscape in many areas of south Texas



Bromeliads on the home tours



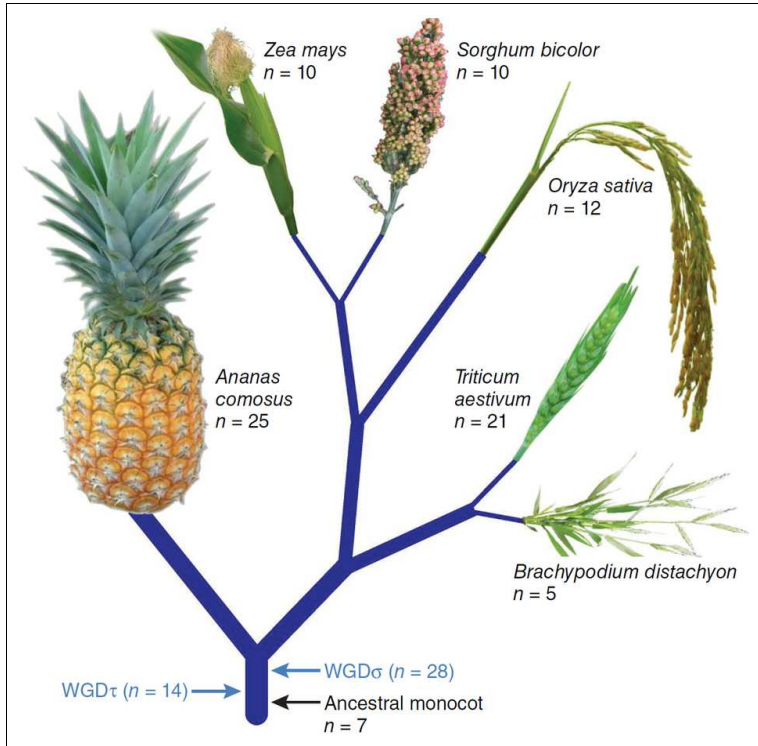
Upcoming events -September **Show & Sale** at Matthaei Botanical Gardens, Saturday, September 10 and Sunday, September 11. 10:00- 4:30 both days. If you are unable to make the July and/or August meetings, but wish to participate in any way, please call Paul Wingert (248)-473-1315 to confirm arrangements, particularly with assistance in show set up.

October meeting – Saturday, October 15, 2:00 PM at Drew and Mallorie’s home. Details to follow in the next newsletter.

SEMBS, the newsletter of the Southeast Michigan Bromeliad Society, appears bimonthly for the purpose of disseminating information about bromeliads and about Society activities. Editor: Penrith Goff. Material published in the newsletter may be reproduced for non-commercial purposes without the express permission of the editor. It is requested SEMBS be credited as the source and that any changes from the original be noted as such. Photo files of illustrations are usually available upon request.

What do the Pineapple and Kentucky Blue Grass Have in Common?

The pineapple (and all bromeliads) share a common ancestor with Kentucky blue grass (and all grasses). The diagram below shows how bromeliads split off while the ancestral line continued to develop as grasses and grains. The bromeliad family, **Bromeliaceae**, and the grass family, **Poaceae**, together make up the order **Poales**.



The grains shown in the diagram are: clockwise: corn, sorghum, rice, wheat. Brachypodium is an annual grass.



If the relationship to grass surprises you, remember the Pitcairnias, the oldest bromeliads, many of which look very much like grass until they bloom.